

## AUTUMN 2018

### INSIDE THIS ISSUE

Fundraising 2018	2
Open Event Photographs	2
Fond Farewells	2
Welcomes and Farewells	2
Welcome Dave	3
Meet our Team	3
Mooring Options	3
Chandlery Questions	3
Charity of the Year	4
Bingo Night	4
Dates for your Diary	4
Amerton Makes its Debut	4
Pictures of Amerton	5
Don't Forget your Electric	5
Update on the Middlewich Breach	5
What's Woody Been Doing?	5
Happy Hour is Back	5
Brokerage Update	6
Want a Change of Direction?	6
Other Brokerage Activities	6
Water Saving Message	8
Toughing up for TM2	8
The Fun Doesn't Stop	8
Two more Aintree Beetles	8
Small Tasks Team Volunteers	8

### SPECIAL POINTS OF INTEREST

- Mooring Options
- Middlewich Breach
- Want a Change of Direction?
- Toughing up for TM2

Edited by Bernie McCrae, compiled by Chris and David Owen-Roberts, copy and imagery contributed by Aqueduct Marina and STTV.

Got a story that you would like to share? We are always on the lookout for new stories. If you have tale to tell please contact Bernie McCrae on 01270 525040 or email

[bernie.m@aqueductmarina.co.uk](mailto:bernie.m@aqueductmarina.co.uk)

# AQUEDUCT NEWS

## A Day for Boaters

**On Saturday 21st July 2018 we hosted a boat focused Open Event and 'buoy' did we have a great time...** The day designed for boaters was specifically open to offer boat owners and interested parties the opportunity to look at the marina's new controlled painting environments, re-vamped chandlery and extensive engineering operations. A selection of used boats were offered for sale on the day along with new boats available from Knights Narrowboats and Aintree Boats.

On land, professional staff, surveyors and suppliers were available to answer all boating questions from buying a boat through to essential maintenance, mooring, painting and much more! Canal societies and trade stands were present including: Promarine Finance, GJW Direct, Canal & River Trust, British Marine, Shropshire Union Canal Society, SUMBA and the Small Task Team Volunteers. Other experts on site included Boat Surveyor Peter Tindall, Boat Safety Examiner Russ Smith and Keith Meadowcroft from Volt Master.

A showcase of Aqueduct Marina's most recent painting projects was also available to view with all workshops open and three recently painted boats on display. Live sign-writing demonstrations were completed by Robin Wagg. Commenting on the day Robert Parton, Marina Managing Director, said, 'After seven years of our successful Family Fun Day, this year we decided on a change of focus to enable us to bring together a community of boaters. This gave existing customers the opportunity to catch up and new visitors the chance to get to know us. We are delighted with the response from the day and would like to thank all those who came. We would also like to say a special thank you to exhibitors, staff and boat owners.

Restoration work on the Canal & River Trust boats was available to view, with special workboats showcasing welding processes and boat fabrication. The day rolled into the evening with a hog roast for moorers and live

music performed by Alex Green. There was also a raffle with all funds going towards Kidney Research UK, the marina's chosen charity for 2018."

We look forward to be will be hosting the event again next year so make sure you keep an eye out for updates!



More photos on page 2



## Fundraising 2018

After the Car Boot and Boat Jumble we held in June and the Open Event Raffle in July we are delighted to announce that we have raised a whopping £590.50!

Thank you for your kind donations. We would also like to say a special thank you to Geoff Harris, n/b Lock and Roll for donating £480.00 from 8 days of boat moving for our brokerage.

On Saturday 8th September we will again be competing in the North West Tough Mudder at Cholmondeley Castle. Please come to reception to sponsor us or alternatively visit our JustGiving page. All proceeds to Kidney Research UK.

The running total for this year so far £1770.86.



DOWNLOAD  
YOUR **FREE** COPY  
OF THE NEW  
AINTREE BEETLE  
CATALOGUE



Scan Me

## Open Event Photographs and a Selection of your Social Media Posts



## Welcomes and Farewells

### A warm welcome to:

Mr Kirkham nb Kingfisher  
Mr Newbold nb Hydeaway  
Mr Mann nb The Slender Delta



### Departures

Mr Middlebrook nb Adonis Blue under offer through Aqueduct Brokerage  
Mr and Mrs Armstrong nb Just-A-Mo  
Mr Graham Tattersall nb Tallulah  
Mr and Mrs Green nb Tantler

### A Fond Farewell to Julie

Aqueduct Marina would like to say a fond farewell to Julie Beedham who worked for the marina for 9 years. Julie previously worked in the caring sector and decided that she wanted a change in direction and wished to pursue her career in caring further.

The Aqueduct Marina team would like to wish Julie all the best for the future and the best of luck in her new role.

## Fond Farewells

*best wishes*

This month we say a fond farewell to Dave and Sue Booth, long term moorers at Aqueduct Marina, and their narrowboat Ends and Beginnings which is now under offer through our brokerage.

We would like to say a special thank you to Dave for his involvement with our chosen charity 2016, The Joshua Tree, helping to raise a magnificent £4,646.50 for the charity.

We would also like to say a special farewell to Martin and Bev Hartley, nb Summer of 82, who were one of the first boats to go down our slipway in 2008 after purchasing their boat through Scenic Boat Builders, managed at the time by our General Manager Chris Moran.

We would like to wish both couples all the best with their new ventures and good luck for the future.



# Mooring Options Before Christmas

**Yes, we said it... now we have stepped into the last month of summer it is the time of year we start to wonder what our mooring options will be once we move in to the Autumn season.** Do not be alarmed as we offer a vast array of mooring and storing options, all of which are designed to fit around your cruising needs!

## Flexi-Moor

A new and innovative mooring option tailored to meet your cruising needs, this option gives the flexibility of long term cruising whilst providing you with a cost-effective alternative to long term mooring. Paid for on a subscription basis over a 12-month period, the cost will either be the same price as paying in instalments or, if cruising breaks are taken, will save you money.

## Moor and Store

Not wishing to use your narrowboat a lot over the Autumn and Winter months? Then this could be the right option for you. A convenient way of storing and using your boat, save on your licence fees by storing out of the water when not in use.

## Annual Mooring

Due to brisk brokerage sales we can now exclusively offer a limited number of moorings for 2018. Set in 100

acres of farmland and the heart of Cheshire's canal network, Church Minshull Aqueduct Marina is conveniently placed to access the popular North West, Trent and Mersey and Llangollen Canals along with the Cheshire Ring and (as currently named by our customers) Four Counties horse shoe. 40ft to 70ft in length we offer fully serviced berths with electric, water, lighting and Wi-Fi to every jetty. The marina also has brokerage, slipway, gantry and repair services on site.

If you would like any further information regarding any of our mooring and storing options, please visit [www.aqueductmarina.co.uk/mooring-options](http://www.aqueductmarina.co.uk/mooring-options). If you would like to book short term, then please visit [www.aqueductmarina.co.uk/book-a-jetty](http://www.aqueductmarina.co.uk/book-a-jetty) or for long term moorings please contact a member of our team.



## WELCOME DAVE

**We'd like to wish Dave a warm welcome to the Aqueduct Marina Team.** A familiar face from around the network, Dave will be working alongside Dave (yes, we now have two!) in the daily operations of our Chandlery. Dave is incredibly knowledgeable, so whether it's sourcing materials to fit out your next narrowboat shell or recommending what paint to use on your current project, Dave is the man to ask! What a difference a Dave makes!



Dave outside the Chandlery

## MEET OUR TEAM...

### The Board

**Robert Parton**  
Managing Director  
[robert.p@aqueductmarina.co.uk](mailto:robert.p@aqueductmarina.co.uk)

**Andrea Parton**  
Human Resources Director  
[andrea.p@aqueductmarina.co.uk](mailto:andrea.p@aqueductmarina.co.uk)

**Jennifer Parton**  
Hospitality and Social Events Director

**Phil Langley**  
Marina and Operations Director  
[phil.l@aqueductmarina.co.uk](mailto:phil.l@aqueductmarina.co.uk)

### Marina Office

**Chris Moran**  
General Manager  
[chris.m@aqueductmarina.co.uk](mailto:chris.m@aqueductmarina.co.uk)

**Bernie McCrae**  
Marketing, Campaigns and PR Manager  
[bernie.m@aqueductmarina.co.uk](mailto:bernie.m@aqueductmarina.co.uk)

**Sarah Rayner**  
Office Manager, Accounts and Board Clerk  
[accounts@aqueductmarina.co.uk](mailto:accounts@aqueductmarina.co.uk)

Marina Reception  
[reception@aqueductmarina.co.uk](mailto:reception@aqueductmarina.co.uk)

### Boat Maintenance Team

**Rob Adair**  
Senior Marine Engineer

**Will Brown**  
Marine Engineer  
[will.b@aqueductmarina.co.uk](mailto:will.b@aqueductmarina.co.uk)

**Darren Smith**  
Marine Engineer

**Scott Astbury**  
Welder/Fabricator

**Alex Strachan**  
Boat Yard Operative

**Ben Allen-Mead**  
Boat Yard Operative

**Paul Taylor**  
Shot Blaster

**Jonathan Howard**  
Boat Painter

### Brokerage

**Nick Beech**  
Brokerage Manager  
[brokerage@aqueductmarina.co.uk](mailto:brokerage@aqueductmarina.co.uk)

### Chandlery

**David Wilkinson**  
Chandlery Assistant  
[chandlery@aqueductmarina.co.uk](mailto:chandlery@aqueductmarina.co.uk)

**Dave**  
Chandlery Assistant

**Alex Bebbington**  
Marine Chandlery Apprentice

### The Galley Restaurant

**Holly Critchley**  
The Galley Manager  
[cafe@aqueductmarina.co.uk](mailto:cafe@aqueductmarina.co.uk)

**Alison Booth**  
Chef

**Joanne Parr**  
Chef

**Maggie, Niamh, Ellie, Maisie, Charlotte and Olivia**

### Marina Grounds

**Woody** - just Woody  
Groundsman

## What would you like from Aqueduct Marina Chandlery?

**First, we would like to thank you for your loyal custom.** This season we thought we'd turn ask you what you'd like from your Aqueduct Marina Chandlery?

The chandlery supplies everything from electrics to consumables so discover what is on your doorstep. You can ask Dave and Dave for advice on anything from boat building to paints - put your suggestion in the box!

Need something for next day? We also have special Tuesday and Thursday deliveries to help take the pressure off.

See our newsletter and social media feeds for top tips for the Autumn season.



## CHARITY OF THE YEAR - KIDNEY RESEARCH UK

Fundraising from the Easter Quiz Night and Prize Draw raised £446 for Kidney Research UK. Please visit [www.aqueductmarina.co.uk/marina-events](http://www.aqueductmarina.co.uk/marina-events) for more information

### Bingo Night

Brought to you by the Galley Café, join us this bank holiday weekend as we open our doors and put our eyes down for a special 'Bank Holiday Bingo Night' on Saturday 25th August. Doors open at 6.30pm. Come and enjoy some tasty American style food served from the Galley Café whilst testing your luck in a round of bingo with some exciting prizes to be won! Eyes down at 8.00pm. Free entry and all welcome. To book a table please visit [www.aqueduct.co.uk/](http://www.aqueduct.co.uk/)



## Amerton makes its Debut

**Canal & River Trust work boat Amerton set off for Stroke-on-Trent from Aqueduct Marina on Thursday 2nd August to be showcased as part of the prestigious Touring Poppies art exhibition at Middleport Potteries.**

After receiving the brand-new C&RT vinyls and full rebuild by our maintenance team, the boat made its debut in our marina before making its short journey down south on the back of a lorry to the exhibition.

As part of the refurbishments our maintenance team carried out extensive restoration to the tired vessel including completely rebuilding parts of the hull and superstructure that, with many years of arduous work, had failed and was beyond repair.

New systems were also introduced including a new engine, craft location indicator and cruising equipment and the cabins were given a new lease of life with stylish yet practical accommodation creating a comfortable working environment for her crew.

Commenting on the success Chris Moran, General Manager said, "It is essential that all craft are fit for purpose and can withstand the harsh environments they are subjected to. All aspects of these vessels have been developed in collaboration with C&RT and other contractors and the combined effort has resulted in a boat that we believe in and will serve the waterways team well for many years to come."

Amerton first came to the marina from Nuneaton, transported from Boot Wharf. Work started immediately with a good pressure wash before all the existing equipment and internal cabin fit-out were completely removed.

After the welding and fabrication work was completed, which forms the initial stage of the process, a new hard wearing 2 Pac paint system was applied on blast cleaned steel in our purpose-built workshops.

Amerton is to be moored in Longport Wharf for the duration of the 6-week event in the presence of Canal & River Trust volunteers, before being moved to the West Midlands to start it's new working life. Amerton is approximately 40 years old and the reconstruction has now provided an additional 20 years' of life.

For more details about the maintenance services which we offer onsite please visit [www.aqueductmarina.co.uk/narrowboat-maintenance](http://www.aqueductmarina.co.uk/narrowboat-maintenance)



Work in progress on Amerton



## DATES FOR YOUR DIARY 2018

See our up-to-date diary online anytime via this link: <http://www.aqueductmarina.co.uk/news>

### Aqueduct Marina Events

25th August	Bingo Night
29th September	Dance Themed Evening
27th October	Halloween Party
24th November	Christmas Meal
31st December	New Year's Eve Party

### External Events

10th - 12th August	Nottingham Riverside Festival
10th - 12th August	Ellesmere Summer Festival
25th - 27th August	IWA Festival of Water
29th August	Historic Transport Rally
31st August - 2nd September	Nantwich Food Festival
14th - 23rd September	Southampton Boat Show
8th - 14th October	Nantwich Words and Music Festival
27th October	Anderton Firework Spectacular
16th November	Nantwich Christmas Light Switch On

To book marina events please contact us on 01270 525040, email [cafe@aqueductmarina.co.uk](mailto:cafe@aqueductmarina.co.uk) or online [www.aqueductmarina.co.uk/marina-events](http://www.aqueductmarina.co.uk/marina-events)



# Pictures of Amerton



Work in progress (left) and the finished cabin side with the new logo (right)

## An Update on the Middlewich Breach

**Repair work is continuing to progress following the breach at Stanthorne on the Middlewich Branch of the Shropshire Union with the latest report issued by Canal & River Trust on 26th July.** So far contractors working with the trust have constructed a temporary access road and compound to reach the last stranded boat, recovered on 22nd June, and access to the breach site.

Other work has included: gaining a Badger Disturbance licence, installing a haul road over Stanthorne, cutting Himalayan Balsam plants in work areas, repairing the wing wall brickwork, reinstating the River Wheelock channel to its original site and re-profiling unstable

sections of the breach area. The main works are expected to last until the end of the year.

To keep up-to-date with all the latest news please visit the Canal & River Trust website [www.canalrivertrust.org.uk](http://www.canalrivertrust.org.uk)



Rescuing the last stranded boat (top left), stabilising the embankment (top centre), constructing a roadway along the canal bed (right), clearing the river channel (bottom left) and re-profiling unstable sections (bottom centre).

## Don't forget your electric...

We are offering free electricity to all our moorers as part of our Beat the Breach campaign so make sure you pop in and get topped up!

## What's Woody been doing?

Our trusted groundsman Woody has been busy this season growing a vast array of new flowers and climbers on to our workshop offices. Make sure you pop over and take a look!

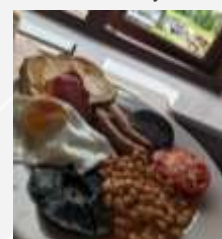


Woody's growing success

## Happy Hour is Back!

Welcome to Beat the Breach Happy Hour! We are offering a free tea or coffee with either a full English or vegetarian breakfast between 10.00 and 11.00 am.

Calling all early birds and breakfast lovers, make sure you come and take advantage of this offer and Beat the Breach with us breakfast style!



## RECENTLY REDUCED

**Aldford Boats** 57ft Cruiser, was £75,950 now £69,995

[www.aqueductmarina.co.uk/alford-boats](http://www.aqueductmarina.co.uk/alford-boats)

**Whitchurch** 57ft Cruiser, was £34,950 now £28,000

[www.aqueductmarina.co.uk/whitchurch](http://www.aqueductmarina.co.uk/whitchurch)

**Kirki** 60ft Traditional, was £66,950 now £62,000

[www.aqueductmarina.co.uk/kirki](http://www.aqueductmarina.co.uk/kirki)

## OTHER BOATS TO VIEW

**Sloley** 57ft Traditional £66,995

[www.aqueductmarina.co.uk/sloley](http://www.aqueductmarina.co.uk/sloley)

**New Beginnings** 58ft Traditional £55,950

[www.aqueductmarina.co.uk/new-beginnings](http://www.aqueductmarina.co.uk/new-beginnings)

**Waters Edge** 57ft Cruiser £44,950

[www.aqueductmarina.co.uk/waters-edge](http://www.aqueductmarina.co.uk/waters-edge)

**Kastaway** 60ft Cruiser £45,000

[www.aqueductmarina.co.uk/kastaway](http://www.aqueductmarina.co.uk/kastaway)

**Tranquility Boat Share** 58ft £2,800

[www.aqueductmarina.co.uk/tranquility1](http://www.aqueductmarina.co.uk/tranquility1)

**Greenfields** 58ft Semi-Traditional £3,000 [www.aqueductmarina.co.uk/greenfields](http://www.aqueductmarina.co.uk/greenfields)

## RECENTLY UNDER OFFER

Tipsy Toad, Adonis Blue, Clover, Dream Catcher, Ivy

## SOLD

Tranquility Boat Share, Hyde Away, Barder, Bamboozled, Daniel Oakley, Songbird, Sampson, Hobbit, Maid of Hare, Ends and Beginnings, Wild Flower



# Brokerage Update

New arrivals this season include:

**Share Boat Grosvenor** 58ft Semi-Traditional £2,500

Launched in September 2002, "Grosvenor" was fabricated by Reeves Boatbuilders and fitted out by Milburn Boats. The boat's exterior was completely repainted by Andy Russell in 2016.



Grosvenor



The boat is wholly owned and managed by a syndicate of private individuals with a total of twelve shares. The group meets twice-annually at which time decisions are taken regarding the boat's upkeep, improvement and future mooring. Most non-routine maintenance and improvement is carried out during the winter months – typically January. For example the bathroom of the boat was revamped during last winter and the galley of the boat is being refitted this upcoming winter.

Each share is entitled to four weeks holiday a year comprising two high season (April to September) and two low season (October to March) weeks. Bookings are made on a rotational basis with the master booking chart being circulated from the top down for the choosing of two high season and one low season weeks, and then recirculated in reverse order for fourth weeks to be chosen.

For more details please visit [www.aqueductmarina.co.uk/grosvenor-boat-share](http://www.aqueductmarina.co.uk/grosvenor-boat-share)

**Boat of the season: Saul**

Built by XR&D in 2011, this impressive narrowboat would be best described as Bohemian style and is on brokerage at £57,995. Not an everyday family boat nor an ideal live aboard, Saul is a Tug style narrowboat and is more of a statement boat completed by the original owner.



Saul



Using predominately oak woods, the interior has a conventional lining, finished with lots of features such as a Belfast style sink, lime green stove tiles and a Japanese style mural on the aft cabin wall.

The fore cabin, which contains the galley and living area, is a sheeted design giving the exterior its working boat effect. Whilst limiting some head height, the actual floor space remains just like any other boat. Also at the fore end of the cabin there is a large space beneath the tug deck; currently this is storage and a utility space with a washing machine.

Equipped with a Beta JD3 Tug engine, Saul handles very well; the engine creating an atmosphere, through both noise and feeling.

In summary you can't help but smile whilst at the helm of this boat.

For more details or to book an appointment to view please visit [www.aqueductmarina.co.uk/saul](http://www.aqueductmarina.co.uk/saul)

# Want a Change of Direction?

Autumn often prompts a change of direction and whether that is the decision to sell your boat or buy one, Nick our Brokerage Manager is here to help. Thinking about selling your boat? Our terms are simple: We offer competitive commission from just 3.4% + VAT, free valuations, a collection service is available,

free pre-sale valet, accompanied viewings, a no sale, no fee guarantee and a professional and dedicated service. There are many advantages to buying a boat. When you are searching for the 'one', use your head over your heart. Nothing is impossible, but we prefer to take an honest

approach. We are open 7 days a week so should any of our boats catch your eye you can come and view at your own convenience. We offer an array of aftercare services with repair workshops, slipway, gantry and mooring available on site, so should you require any further assistance then we have got you covered. But aside from all the finer details, a boat can provide you with the flexibility to enjoy the UK canal network at your own pace.





## AWARD WINNING MOORINGS



**DUE TO BRISK BROKERAGE SALES AQUEDUCT MARINA CAN NOW OFFER  
A LIMITED NUMBER OF MOORINGS FOR 2018**



FOR MORE DETAILS  
ABOUT OUR INNOVATIVE MOORING AND STORING OPTIONS PLEASE VISIT

**[WWW.AQUEDUCTMARINA.CO.UK](http://WWW.AQUEDUCTMARINA.CO.UK)**





## Water Saving Message

Due to the continued drawdown of the reservoirs, the prolonged low rainfall and a forecast for further dry weather, Bosley Flight (locks 1 to 12) on the Macclesfield Canal has been restricted to 8.00 am - 2.00 pm daily.

Help conserve the water by: Sharing locks where possible and making the best use of the water available.

- Ensuring paddles are fully closed once you've passed through the lock
- Aim for minimal contact when navigating through the locks by ensuring gates are fully open as you pass through
- Please be aware that pushing gates open with a boat can also damage the gate lining, thus increasing leakage.

## Toughing up for TM2

### We are toughing up for Tough Mudder Round Two!

On Saturday 8th September we are returning to Cholmondeley Castle, Cheshire for a second round of Tough Mudder in aid of Kidney Research UK. 10 miles, 20 obstacles and the muddiest course in the

UK, we will be pushing ourselves through sweat and tears, working together to conquer punishing obstacles to help raise awareness of kidney disease.

To sponsor us please call into Reception. Thank you!



Tough Mudder 2017

## The Fun Doesn't Stop

### Head for the IWA Festival of Water at St Neots, Cambridgeshire over the bank Holiday weekend in August.

Enjoy an array of attractions for all the family and boats lining the River Great Ouse next to Regetta Meadow.

Action4Youth will be giving people the opportunity to try canoeing and paddle boarding or you can have a go at water zorbing. Alternatively CRT will be

running boat trips on Sunday and Monday.

Stands will include birds of prey and a novelty dog show. Try being a canal restoration volunteer and drive a real digger with IWA's Waterway Recovery Group.

There will be a boat handling competition, illuminated boats and a firework display.

For more details please visit the IWA website

[www.waterways.org.uk](http://www.waterways.org.uk)



## Two more Aintree Beetles Launched

We'd like to say congratulations to Mr & Mrs Mitchell and Hannah & Simon on the launch of their Aintree Beetles 'Woodfalls' and 'Peg' this season. Both 30ft in length, the boats were delivered by lorry and launched into the marina. We'd like to wish both couples the best of luck and happy cruising. For more details on the Aintree Beetle range please visit

[www.aqueductmarina.co.uk/aintree-beetles](http://www.aqueductmarina.co.uk/aintree-beetles)



Woodfalls (top) and Peg

## Small Tasks Team Volunteers

After a brief interlude whilst some members went cruising (and CRT reorganised!) July saw us visiting Acton Bridge on the River Weaver. There were several jobs to be done, though it was very hot! The old steps needed rebuilding. This proved more difficult than it seemed at first sight, as there was a big boulder buried just where the bottom step needed to be.



Moving the boulder

However, perseverance was rewarded and the steps were duly completed. There were many tall bollards; many of them had red rust on one side. These were painted – and touched up on the following day. A long stretch of quayside mooring needed serious rust removal before painting. An old fence runs round the area, keeping the unwary off the steep bank. This also needed some work before painting could begin, but the end result was quite pleasing in spite of some holes in the uprights!



Tall bollards that were painted

Painting the mooring bollards was completed just as the first boat arrived!

There is good deal of work lined up for us in the coming months. This includes revisiting Acton Bridge where there is more fencing, as well as a possible second coat of paint to the quayside. Our services are also called for at locks on the Llangollen Canal including Marbury, Quisley, Willey Moor and Povey's, but first we have to go to Ellesmere Festival and to Whitchurch Rally with our STTV stall and trip boat service.

We are always prepared to welcome new members. Contact John Riley for details:

[john.riley295@btinternet.com](mailto:john.riley295@btinternet.com) 01352 741322/07518 040632

Please address all STTV Bulletin matters to:

John Bannister: [johnbann@aol.com](mailto:johnbann@aol.com)